

A woman with dark hair in a ponytail, wearing a green patterned shirt and a headset, is seated at a desk in a modern office. She is looking at a large computer monitor. In the foreground, a Yealink IP phone with a color screen is visible on the desk. The phone's screen shows the time 20:36 and some icons. The background is slightly blurred, showing other office workers and a desk lamp.

# Yealink

# YEALINK IP PHONE

# PORTFOLIO

Make communication simpler and more efficient





# Why Yealink IP Phone



# Why Yealink- Top-notch, Industry Expert

**2001**

Founding Year

**2005**

USB Phone Market  
Share Top1

**2015**

Strategic Partnership  
with Microsoft

**2018**

SIP Phone Market  
Share Top1 &  
Customer  
Satisfaction NO.1

**2021**

IP Phone & SIP Phone  
Market Share Top1

**1/500**

One in every 500 people on earth owns  
or is using a Yealink product.

**500,000**

Yealink IP Phones serve more than  
500,000 companies around the world.

**15,000,000**

Over 15 million Yealink IP endpoints  
have been sold globally.

# Why Yealink- Constant R&D For Best Practices

## 20+ Years

20+ years experience on audio communication technology.

## 8+ Years

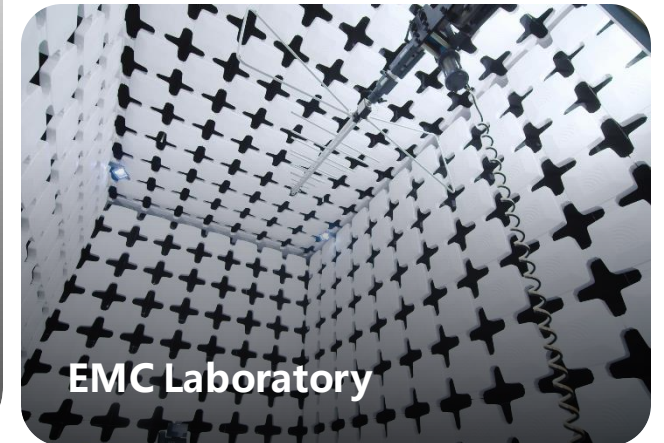
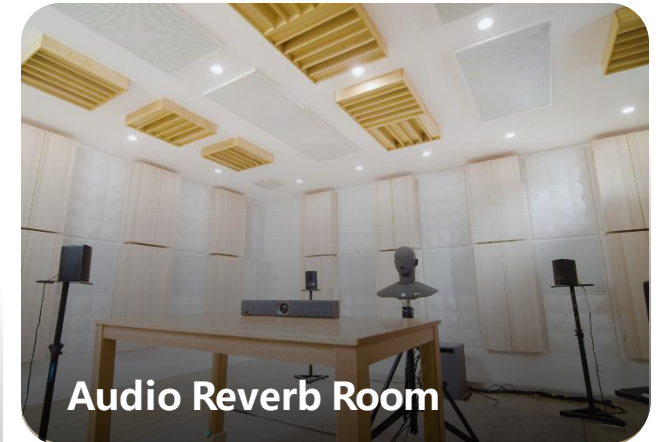
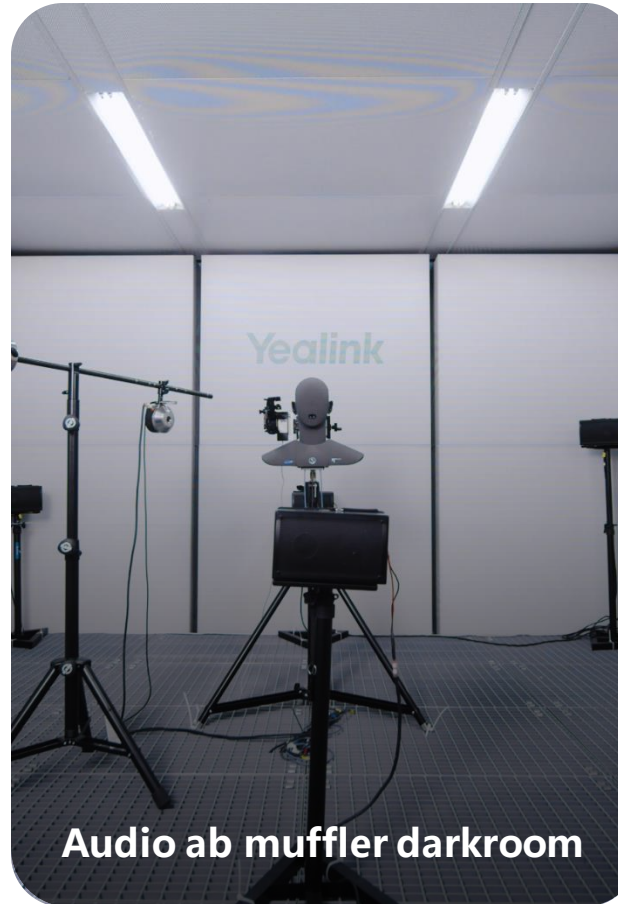
8+ years experience on wireless technology, DECT and Bluetooth.

## 600+ Patents

600+ patents technologies like Acoustic Shield Technology, AI Noise Cancellation Technology etc.

## 50% Engineers

Over 50% of Yealinkers are engaged in technical and R&D work, creating the best experiences for our customers.





# Why Yealink- Full-Scenario Solution For All Business

## Team Collaboration

Easy remote conferencing



## On-the-go

Easy use in certain mobile work scenarios



## Executive

Easy Collaboration in front of your desk



## General Office

Superb HD call quality  
best in class GUI design



## Common Areas

Meet basic communication needs



## Front Desk

Professional reception service



# Why Yealink- Full-Scenario Solution For All Business

## T5 Series IP Phone



VP59



T58W with Camera



T58W Pro



T58W Pro with Camera



T58W



T57W



T54W

## T4 Series IP Phone



T48U



T46U



T43U



T42U

## T3 Series IP Phone



T33G



T33P



T31G



T31P



T30P



T30

## CP Series Conference Phone



CP965



CP935W



CPW935W-BASE



CP925

## Business Handset DECT handset



W73H



W56H



W78H



W59R



W57R

## Ruggedized Handset DECT handset



W70B (Single-cell)



W80 (Multi-cell)



W90 (Multi-cell)



# Why Yealink- Great Applause From Market

“Yealink’s leadership position in the IP and SIP desktop phone market is proven by its effective growth strategy, sustainable above-market growth, price/performance value, excellent customer service experience and strong brand equity.

—by [Frost and Sullivan](#)

“All Yealink devices are easy to understand and use, stable and can be fully managed and monitored by the IT.”

—by [Ullrich, Christian, Teams Leader Collaboration Services of Brose](#)

“In one of the most essential customer satisfaction measurements, called Recommend-To-A-Friend, Yealink beat out every vendor, with 99% of Yealink customers saying they would recommend Yealink to a friend.

—by [Eastern Management Group](#)

“The school evaluated various phones and ultimately chose Yealink for its great audio quality and easy-to-use features.”

—by [Jason Durham, Director Information Tech of Tulsa Tech](#)

“The employees love the new phones, the response has been nothing but positive.”

-- [Dan Hicks, Johnston County Schools Director of Technology Services](#)

# Why Yealink- Great Applause From Market

## Our Partners





# YEALINK T5 BUSINESS PHONE SERIES

Redefining Next-Gen Personal  
Collaboration Experience

---



# Yealink T5 Premium Business Phone Series



VP59



T58W Pro



T58W Pro with camera



T58W



T58W with camera

## Smart Business Phone

Recommended Users: Senior managers, Executives with video calling needs



T53



T53W



T54W



T57W

## Prime Business Phone

Recommended Users: Office workers with heavy to moderate call load

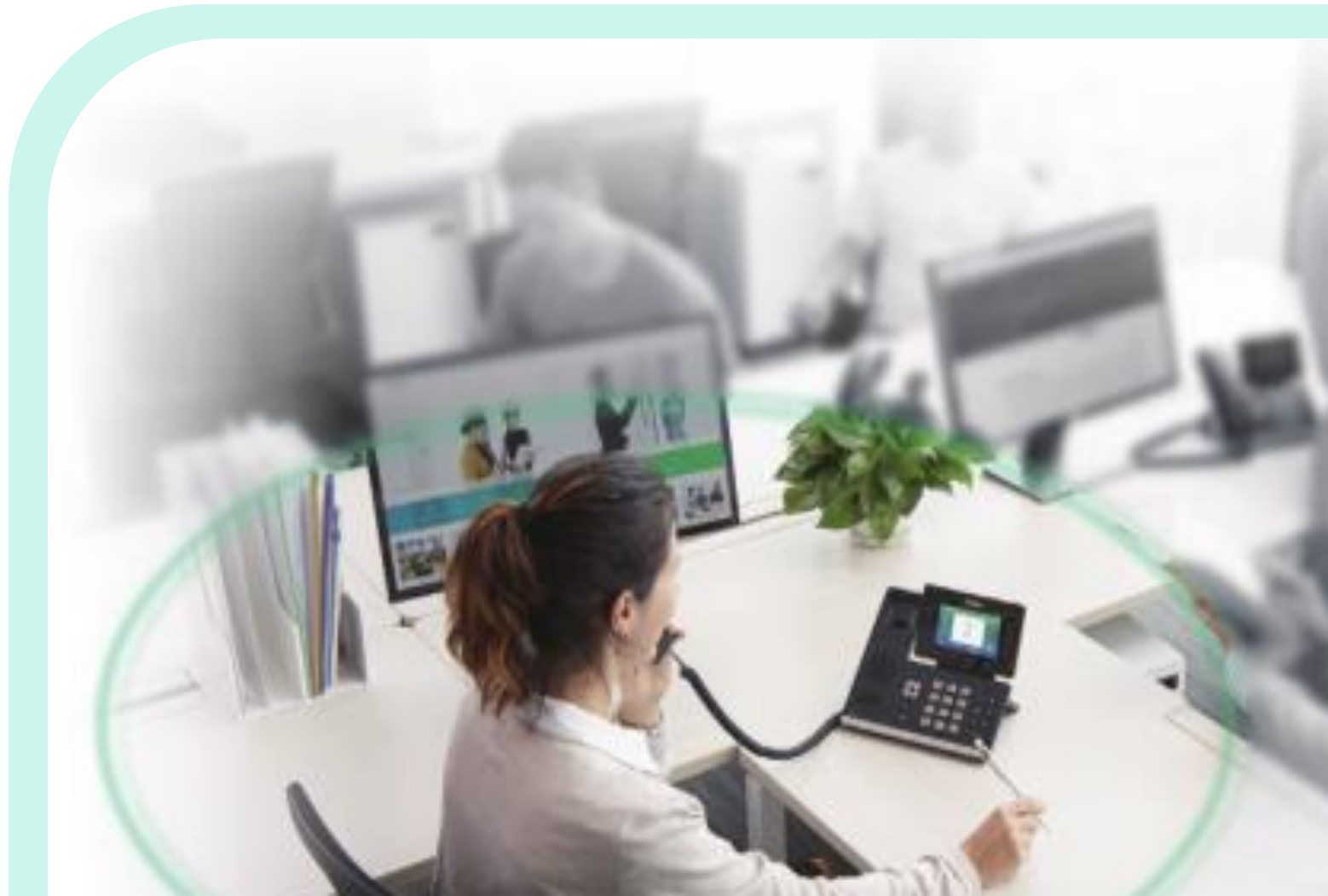
The new T5 business phone series is one of the industry's most advanced IP desk phone portfolios, providing an exceptional communication and collaboration experiences for businesses of all sizes.



# Key Features – Distraction Free, Immersive Conversations

## Yealink Acoustic Shield technology

- Deliver distraction-free voice clarity with the virtual "shield"
- Intelligently block out background noise
- Especially for busy and noisy workplaces such as call centers and open offices,



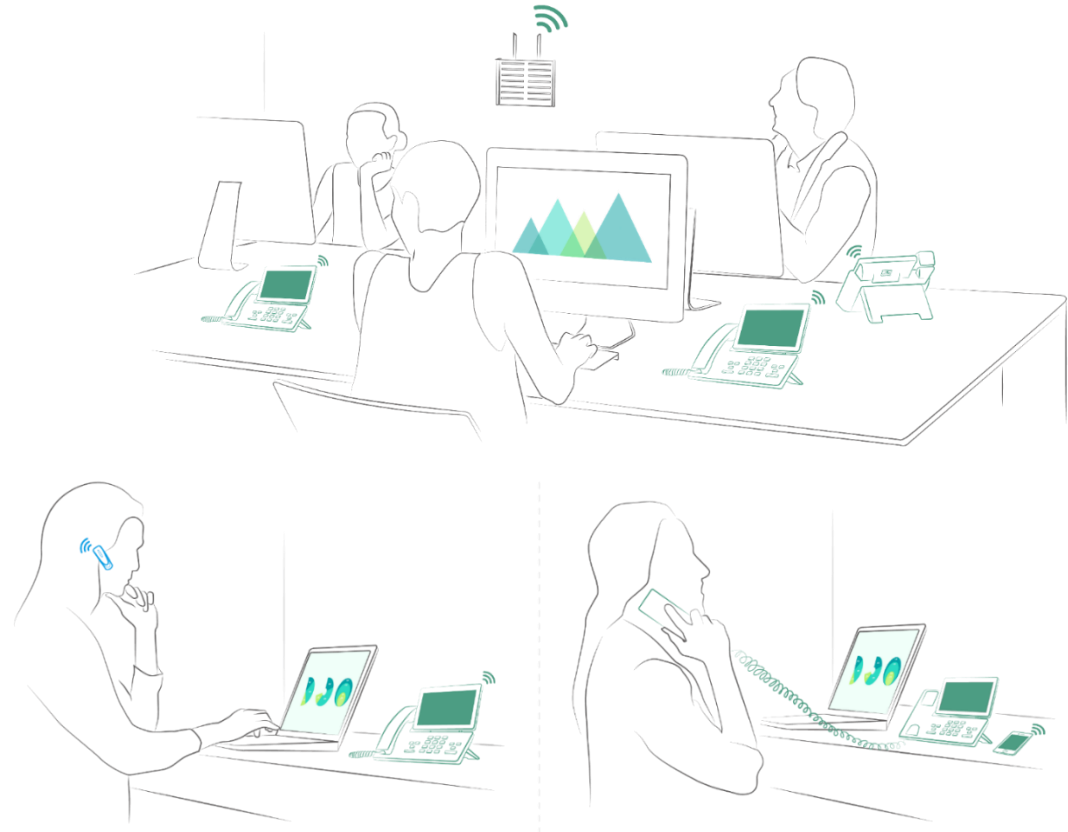
# Key Features – Built-in 5G Wi-Fi & Bluetooth

## More Applicable Scenarios

- Old building/warehouse, wireless scene
- School/hospital, wall-mounted scene
- home office scene

## More Possibilities

- Connect a Bluetooth headset
- Connect to a Bluetooth phone
- While connecting to WIFI, it can also connect to a Bluetooth headset



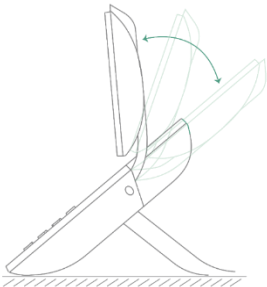
# Key Features – Cutting-Edge Display with Intuitive UI

## Adjustable High-Resolution Display

- Adjustable from 40 to 90-degree to meet various lighting conditions and viewing angles
- Bring vivid and clear visual presentation under diverse lighting conditions with flexible viewing angles.

## Intuitive UI and Clear Navigation

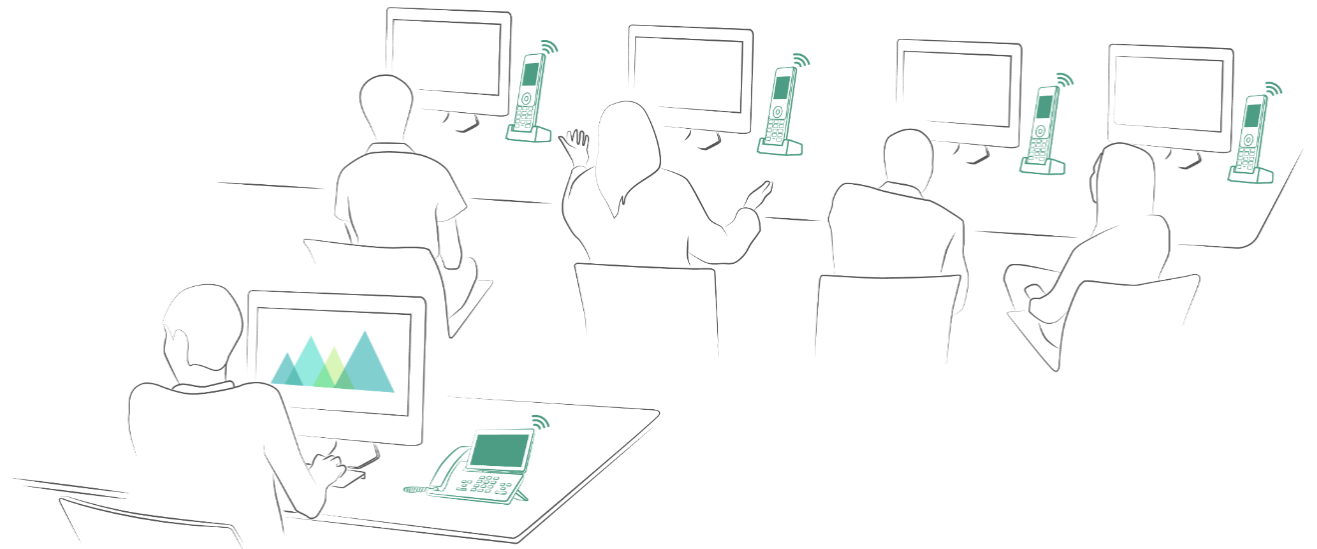
- The new UI optimizes the user experience with more intuitive and clear navigation for high-efficiency communication.





# Key Features – More Possibilities Powered by New High-performance Processor

- Seamlessly compatible with the Yealink DECT Dongle DD10K, connected with up to 4 Yealink DECT handsets.
- Ideal for SMBs as well as home offices, adding significant flexibility and mobility to free the workers from the desk.



# Key Features – More Possibilities Powered by New High-performance Processor

Seamlessly compatible with EXP50

Front-end configuration Speed Dial to achieve one-key speed dial

- The boss and secretary can configure the BLF function to monitor the call status of the account, pickup and retrieve calls, etc.
- Desktop office configuration other shortcut functions such as Intercom, Forward, Paging, etc.



When connected to T54W  
EXP50 automatically switches to color style



When connected to T53W  
EXP50 automatically switches to black and white style

# Special Features – Innovative Bluetooth Handset, Free from Cord Constraint

- Adopting the innovative Bluetooth handset BTH58, Yealink T58W Pro with Camera pervades wireless communication by allowing the user to move around freely and conveniently.
- With BTH58, you can leave desk to find documents and get coffee while making phone calls, greatly improving working efficiency and flexibility.





## Special Features – Exclusive UC/SIP Hybrid Meeting



- With BT51, Yealink T54W can be connected to a PC via Bluetooth as a USB peripheral device for UC platform calls, such as Team, Zoom, and RingCentral.
- The solution also supports hybrid UC/SIP meetings, enabling seamless internal and external communication, bringing much more convenience.

# Specifications

Product



T53/T53W





T54W



T57W

|                            |                    |                |                                  |
|----------------------------|--------------------|----------------|----------------------------------|
| Screen Size                | 3.7" graphical LCD | 4.3" color LCD | 7" color Capacitive Touch Screen |
| Operating System           | Linux              | Linux          | Linux                            |
| Display Pixel              | 360x160            | 480x272        | 800x480                          |
| LCD Type                   | Adjustable         | Adjustable     | Adjustable                       |
| Built-in Wi-Fi             | T53 X<br>T53W √    | √              | √                                |
| Built-in Bluetooth 4.2     | T53 X<br>T53W √    | √              | √                                |
| Acoustic Shield Technology | √                  | √              | √                                |
| Corded Cordless Phone      | √                  | √              | √                                |
| EXP50                      | √                  | √              | √                                |

# Specifications

|                              |  |   |   |
|------------------------------|--|---|---|
| Product                      |  |  |  |
|                              | T58W   | T58W Pro  | VP59  |
| Screen Size                  | 7" 1024X600 Capacitive Touch Screen  | 7" 1024X600 Capacitive Touch Screen   | 8" 1280 x 800 Capacitive Touch Screen   |
| Operating System             | Android  | Android   | Android   |
| Bluetooth Wireless Handset   | X  | √   | X   |
| Display Pixel                | Adjustable   | Adjustable  | Adjustable  |
| LCD Type                     | √  | √   | √   |
| Built-in Wi-Fi/Bluetooth 4.2 | √  | √   | √   |
| Acoustic Shield Technology   | √  | √   | √   |
| Cordless Phone               | √  | √   | √   |
| EXP50                        | √  | √   | X   |



# YEALINK T4 BUSINESS PHONE SERIES



# Yealink T4 Professional Business Phone Series



T48U



T46U

Recommended Users: Executives, knowledge workers, managers



T42U



T43U

Recommended Users: workers in common areas and co-working spaces

Yealink's T4U Series phones are an enterprise-grade solution with different endpoints for the most prevalent usages in various business sections.

The New Series embraces an ultra-elegant appearance with comfortable tactile and user-friendly UI, which is a perfect fit in modern working spaces with an easy-to-use and productive experience.



# Key Features – New Powerful Chipsets, Boost Productivity

T4U series are armed with the new hardware and powerful chip that guarantee a strong support for rich phone functions, to ensure smooth communications in your daily work.



Sleek Experience for  
Voice Communication



Reliable System  
Stability



Scalable for Future  
Expansions



10-way  
Conferencing



Optimized Operating  
Speed



\*Only T48U and T46U support 10-way conferencing, T43U and T42U support 5-way conferencing.



# Key Features – Dual USB Ports for Flexible Expansion Choices



- No EXT port anymore
- Totally support six kinds of USB accessories
- Use any two of USB accessories as you need



USB Headset



USB Flash Drive



Bluetooth USB Dongle



Wi-Fi USB Dongle



EHS40



EXP43

# Key Features – Dual USB Ports for Flexible Expansion Choices

- Supported models: T43U/T46U/T48U
- USB connection
- Screen color self-adapting:
  - ✓ Connecting to T43U: Black-and-white interface with color icons, unified experience
  - ✓ Connecting to T46U/T48U: Color interface with color icons



# Specifications

| Product                  | T42U  | T43U  | T46U  | T48U  |
|--------------------------|---|---|---|---|
|                          |  |  |  |  |
| LCD                      | 2.7" graphical LCD  | 3.7" graphical LCD  | 4.3" color LCD  | 7" color touch screen   |
| Resolution               | 192 x 64  | 360 x 160   | 480 x 272   | 800 x 480   |
| Back light               | √   | √   | √   | √   |
| SIP account              | 12  | 12  | 16  | 16  |
| Line Key                 | 6   | 8   | 10  | 0   |
| Memory Key               | 15 (3 pages of 5 keys)  | 21 (3 pages of 7 keys)  | 27 (3 pages of 9 keys)  | 29 touch keys   |
| HD Voice                 | HD Speaker,HD Handset   | HD Speaker,HD Handset   | HD Speaker,HD Handset   | HD Speaker,HD Handset   |
| Wide-band Codecs         | G.722, Opus   | G.722, Opus   | G.722, Opus   | G.722, Opus   |
| Narrow-band Codecs       | G.711(A/μ), G.729A/B, G.726,G.723.1, iLBC, Opus                                   | G.711(A/μ), G.729A/B, G.726,G.723.1, iLBC, Opus                                     | G.711(A/μ), G.729A/B, G.726,G.723.1, iLBC, Opus                                     | G.711(A/μ), G.729A/B, G.726,G.723.1, iLBC, Opus                                     |
| N-way Conferencing       | 5   | 5   | 10  | 10  |
| Ethernet Port            | Dual-port Gigabit Ethernet  | Dual-port Gigabit Ethernet  | Dual-port Gigabit Ethernet  | Dual-port Gigabit Ethernet  |
| PoE                      | √   | √   | √   | √   |
| Handset Port (RJ-9)      | √   | √   | √   | √   |
| Headset Port (RJ-9)      | √   | √   | √   | √   |
| USB Port (2.0 compliant) | 2   | 2   | 2   | 2   |
| USB Headset              | √   | √   | √   | √   |



# YEALINK T3 BUSINESS PHONE SERIES





# Yealink T3 Classic Business Phone Series



T30/T30P



T31/T31P/T31G






T33P/T33G

Recommended users: frontline staff who needs reliable wired telephone

Yealink's T3 series is a classic and cost-effective entry-level business IP phone series for daily desktop voice communications. The T3 series maximizes productivity and enhances collaboration for businesses of various scales.

# Specifications

| Model                                  | T30/T30P   | T31/T31P/T31G   | T33P/T33G   |
|--|--|---|---|
|  |  |  |  |
| LCD                                    | 2.3" graphical LCD   | 2.3" graphical LCD  | 2.4" color LCD  |
| Resolution                             | 132 x 64   | 132 x 64  | 320 x 240   |
| Back light                             | x  | √ (Adjustable Brightness)   | √ (Adjustable Brightness)   |
| SIP account                            | 1  | 2   | 4   |
| Line Key                               | 0  | 2   | 4   |
| Memory Key                             | 0  | 2   | 12(4 pages of 3 keys)   |
| PoE                                    | √ (T30P)   | √ (T31P/T31G)   | √   |
| Gigabit Ethernet                       | x  | √ (T31G)  | √ (T33G)  |
| Wireless Headset Adapter               | EHS35  | EHS35   | EHS35   |
| N-way Conferencing                     | 5  | 5   | 5   |
| Wide-band Codec                        | G.722, Opus  | G.722, Opus   | G.722, Opus   |
| Narrow-band Codecs                     | G.711(A/μ), G.729AB, G.726, iLBC, G.723.1  | G.711(A/μ), G.729AB, G.726, iLBC, G.723.1   | G.711(A/μ), G.729AB, G.726, iLBC, G.723.1   |
| Foot Stand                             | 2 adjustable angles  | 2 adjustable angles   | 2 adjustable angles   |
| Wall Mounting                          | √  | √   | √   |
| Security Slot                          | √  | √   | √   |
| External Yealink AC Adapter (optional) | AC 100~240V input and DC 5V/600mA output   | AC 100~240V input and DC 5V/600mA output  | AC 100~240V input and DC 5V/600mA output  |

# YEALINK CONFERENCE PHONE SERIES

---



# Yealink Conference Phone Series



CP965



CP935W/ CP935W-Base



CP925

Recommended for: small to large meeting room or ideation space

Yealink audio conferencing solutions is dedicated to providing clear and smooth conference communication experiences for indoor and remote attendees, and helps customers reduce communication costs and increase productivity.



# Key Features – Ingenious Next-Gen Designs in Modern Workplace

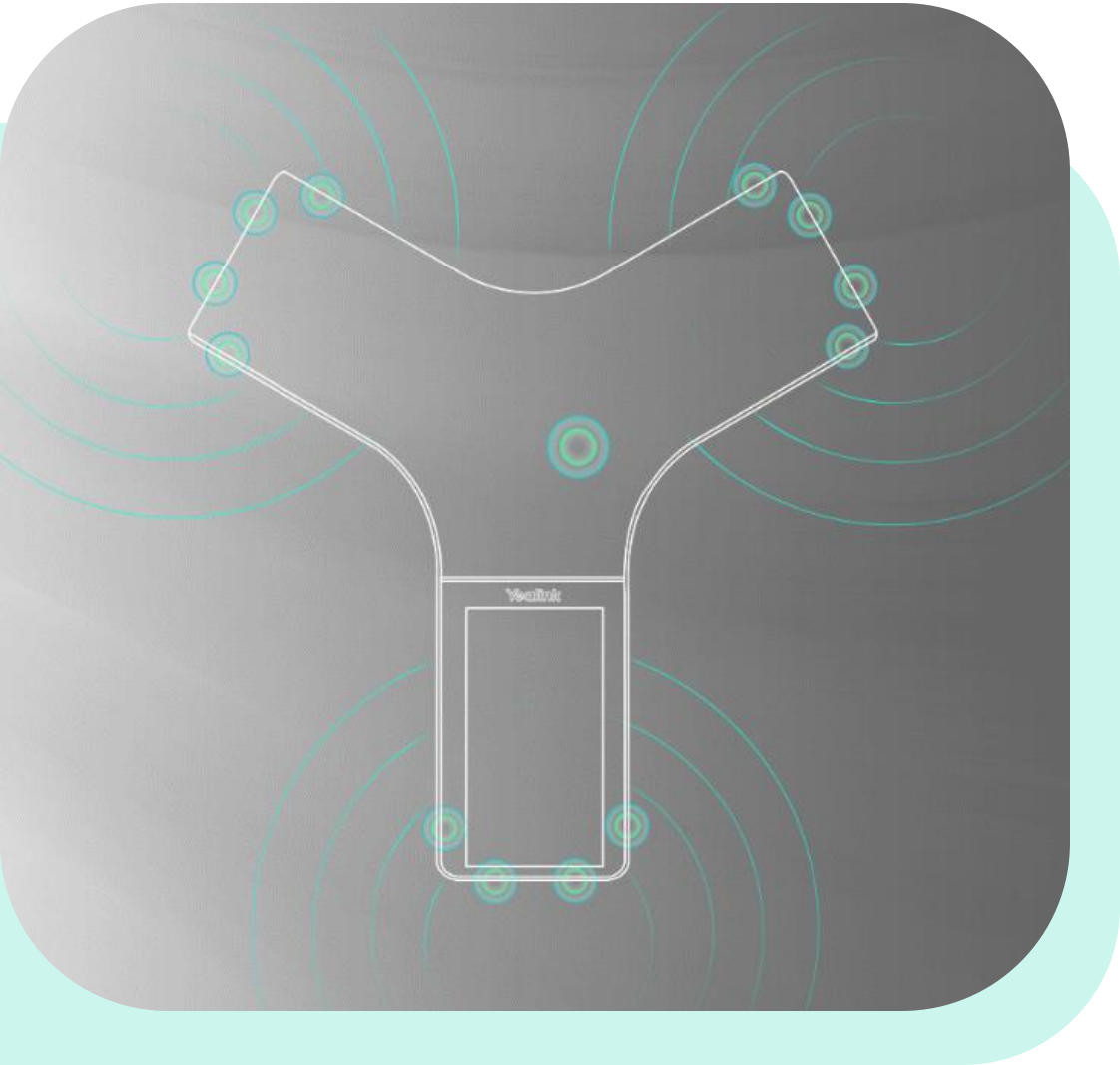


- The Yealink CP Series has a premium business styling, which is a perfect fit for the modern workplace.
- CP965 is covered by all-black acoustics fabric, has a 5" capacitive touch screen, and is the Reddot award-winner in 2021.



reddot winner 2021

# Key Features – Game-changing Audio Presence for Studio-like Experience



**Wrapped under the stunning appearance is a powerful set of technology that give Yealink conference phones outstanding audio quality and wide voice pick up range.**

- Yealink Far-field Sound Pickup Technology
- Smart Noise Filtering and Noise Proof Technology
- 13-microphone array and 360° voice pick-up for CP965, 7-microphone array for CP935W and CP925, enable 360° voice pickup
- The advanced speaker also activates a max. 94db/0.5m performance.

# Special Features – Revolutionary Wireless, Extra Mobility and Flexibility



**CP935W has two modes: Wi-Fi mode and DECT modes to suit the needs of different scenarios.**

- Yealink CP935W can register SIP account both via Wi-Fi and DECT base directly
- Enhance wireless communication with improved calling and conferencing experience, reliable battery performance and broad special applicability.

# Special Features – Revolutionary Wireless, Extra Mobility and Flexibility



## Yealink CPW65 - Wireless DECT Expansion Mic for the Yealink CP965

- Solve the bottleneck of sound pickup in large meeting rooms
- Black fabric cover and has water-resistant, grease-resistant, and antifouling properties
- 3-meter (Extra to the CP) and 360° voice pickup
- Up to 20-meter connection distance with CP965
- 11-day standby time and 13-hour talk time
- Intuitive capacitive mute buttons



# Specifications



CP925



CP935W



CP965

| Model                       |                             |                             |                             |
|-----------------------------|-----------------------------|-----------------------------|-----------------------------|
| LCD                         | 4" multi-touch color screen | 4" multi-touch color screen | 5" multi-touch color screen |
| Operating System            | Linux                       | Linux                       | Android                     |
| Voice Pickup                | 20ft                        | 20ft                        | 20ft                        |
| Built-in Microphone Array   | 7                           | 6                           | 13                          |
| Wireless Mic                | -                           | -                           | 2x CPW65                    |
| Built-in Wi-Fi              | √                           | √                           | √                           |
| Built-in Bluetooth          | √                           | √                           | √                           |
| N-way Conference            | 5                           | 5                           | 10                          |
| Hybrid UC Meeting           | √                           | √                           | √                           |
| Noise Proof and Suppression | √                           | √                           | √                           |

# YEALINK DECT PHONE SERIES



# Yealink Business DECT Phone Series



**W78H Premium DECT Handset**  
Recommended for executive suites  
and SMEs



**W56H Prime DECT Handset**  
Recommended for supermarkets  
and SOHO



**W73H Basic DECT Handset**  
Recommended for warehouses and  
factories

Enabling telephony communication in mobile working is of great significance in certain scenarios and environments. Yealink Business DECT Phone Solution is specifically designed to power up on-the-move communication.

# Key Features – Ergonomic Design, Superb HD Audio, User-Friendly Features



## W78H

- New modern commercial design that is more compact and portable than ever, 2.4" color screen with intuitive user interface
- Solid surface, scratch and disinfectant resistance
- HD voice and noise cancellation for crystal-clear audio experience
- Built-in Bluetooth 5.1 for seamless connection to Yealink BH Headsets; Vibration Alarm; Quick Charging



# Key Features – HD Audio Quality, Long Battery Life, Rich Features



## W56H

- 2.4" color screen with intuitive user interface and elegant keypad design with illumination and keypad lock
- Full-duplex speakerphone and HD voice and support FNR (Flex Noise Proof)
- Long battery life for up to 30 hours talk time and 400 hours standby time
- Headset connection via 3.5 mm jack and rugged spring-loaded belt clip

# Key Features – HD Audio Quality, Stable Communication Experience

## W73H

- 1.8" color screen with brand new user interface
- HD voice and Support FNR (Flex Noise Proof)
- Long battery life for up to 35 hours talk time and 400 hours standby time
- Headset connection via 3.5 mm jack and Rugged spring-loaded belt clip
- Performance and algorithm optimization to improve the response speed of the handset



# Yealink Ruggedized DECT Phone Series



**W57R**

## **Entry-level Ruggedized Handset**

Recommended for workers in challenging environments like factories, warehouses, hotels, etc.



**W59R**

## **Professional Ruggedized Handset**

Recommended for office staff who need to walk around frequently especially in very challenging areas



Dusty Environment



Humid Environment



Environment Easy to Fall



Jobs Easy to Dirty Handset



Jobs Should Use Both Hands



0~-10℃ Environment



Noisy Environment



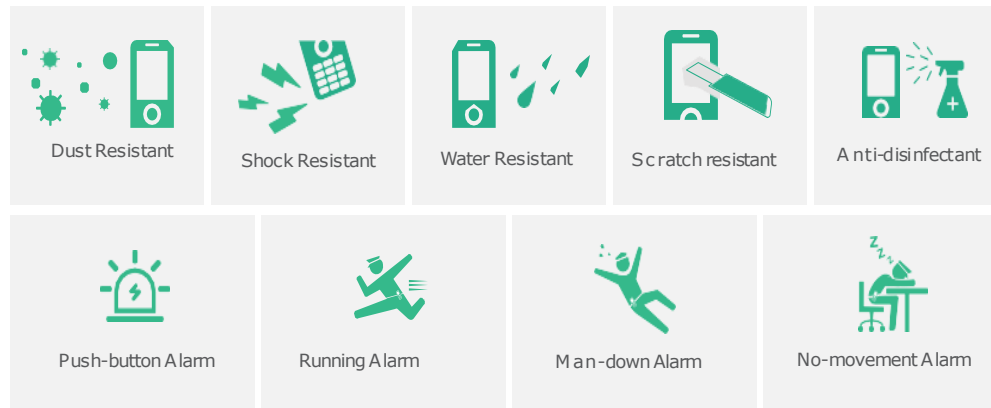
Dangerous Jobs

# Key Features – Highly Resistant, Worthy of Reliance, Free From Distraction



## W59R

- IP67 standard
- HD voice with Opus audio codec and Noise Cancellation for optimal audio experiences
- Up to 28 hours of talk time (18 hours with Bluetooth headset) and up to 360 hours of standby time (200 hours with Bluetooth headset)
- Cushions the occasional fall and can easily withstand falls of up to 3.5 meters
- Alarm functions helping send emergency calls at the instant of occurrence.



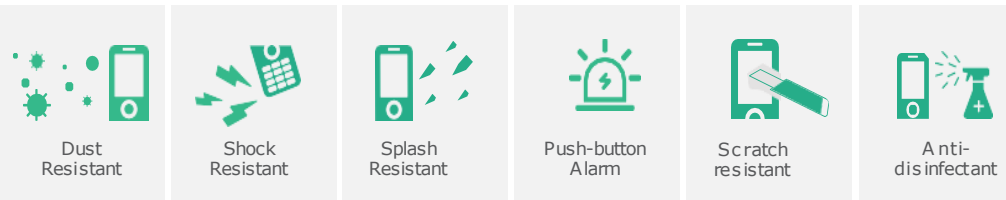


# Key Features – Noise Free, Professional Protection, User-Friendly Features



## W59R

- IP54 standard
- 1.8" color screen with intuitive UI
- HD voice with Opus audio codec and Noise Cancellation
- Up to 40 hours of talk time and up to 575 hours of standby time
- Cushions the occasional fall and can easily withstand falls of up to 3.5 meters
- UV-C ultraviolet radiation



# Specifications

| Business Handset      |  |  | Ruggedized Handset                     |  |  |
|-----------------------|--|--|--|--|--|
| Model                 | W73H                                   | W56H                                   | W78H                                   | W57R                                   | W59R                                   |
| Size                  | 144.4mm x 48.4mm x 21mm                | 175mm x 53mm x 20.3mm                  | 151mm x 49.5mm x 21mm                  | 157 mm x 51 mm x 24 mm                 | 157 mm x 51 mm x 24 mm                 |
| Weight                | 119g                                   | 148g                                   | 126g                                   | 185g                                   | 185g                                   |
| Protection level      | NA                                     | NA                                     | NA                                     | IP54, 3.5-meter fall proof             | IP67, 3.5-meter fall proof             |
| LCD                   | 1.8" 128 x 160                         | 2.4" 240 x 320                         | 2.4" 240 x 320                         | 1.8" 128 x 160                         | 1.8" 128 x 160                         |
| Battery               | 400h/35h                               | 400h/30h                               | 166h/21h                               | 575h/40h                               | 360h/28h                               |
| Signal                | Indoor Range:50m<br>Outdoor Range:300m | Indoor Range:50m<br>Outdoor Range:300m | Indoor Range:50m<br>Outdoor Range:300m | Indoor Range:50m<br>Outdoor Range:300m | Indoor Range:50m<br>Outdoor Range:300m |
| Audio quality         | HD/CAT-<br>iq2.0/Opus/AMR/FNR          | HD/CAT-iq2.0                           | HD/CAT-iq2.0/Opus/AMR/FNR              | HD/CAT-<br>iq2.0/Opus/AMR/FNR          | HD/CAT-<br>iq2.0/Opus/AMR/FNR          |
| No perception upgrade | ✓                                      | ✓                                      | ✓                                      | ✓                                      | ✓                                      |
| Wired headset jack    | 3.5mm                                  | 3.5mm                                  | 3.5mm                                  | ✗                                      | ✗                                      |
| Bluetooth             | ✗                                      | ✗                                      | Bluetooth 5.1                          | ✗                                      | Bluetooth 4.2                          |
| Vibration             | ✗                                      | ✗                                      | ✓                                      | ✓                                      | ✓                                      |
| Belt-clip             | Spring-loaded                          | Clip                                   | Spring-loaded                          | Spring-loaded                          | Spring-loaded                          |

# Yealink DECT Single-cell System - W70B DECT Base Station

- Designed for small- to medium-sized business, single-cell IP phone systems with up to 10 DECT endpoints and 6 repeaters.

## Premium Audio Performance

- Better performance in signal stability and audio quality by supporting Opus codec and noise cancellation technologies.

## Productive DECT Ecosystem with All-rounded Endpoints

- Compatible with Yealink's whole series of DECT endpoints including handsets, conference phones and DD phones.

## Easy Deployment and Efficient Management

- Yealink's Redirection and Provisioning Service (RPS) and Boot mechanism to realize the Zero Touch Provisioning.



up to 10  
DECT Handsets



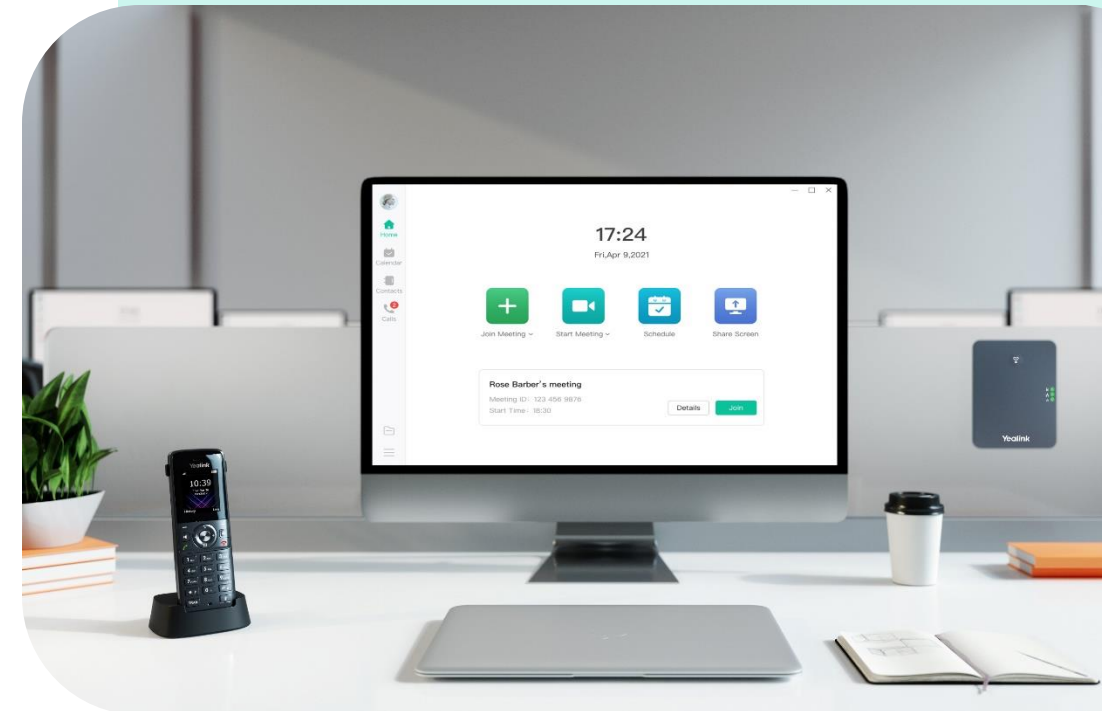
up to 20  
Simultaneous Calls



up to 10  
SIP Accounts



up to 6  
DECT Repeaters



# Yealink DECT Single-cell System - W70B DECT Base Packages

For business workplaces



W73P (W73H+W70B)



W76P (W56H+W70B)



W78P (W78H+W70B)

For challenging and harsh environments



W79P (W59R+W70B)



W77P (W57R+W70B)



# Yealink DECT Multi-cell System – W80 & W90 DECT Base Station



Yealink's DECT multi-cell system provides seamless handover and is an industry-leading roaming solution.

Ideal for diverse scenarios including supermarkets, warehouses, factories, hotels, etc. for the wide converge.



**Yealink VM Solution**  
(VM+W90DM+W90B)

- 10DMs
- 600 bases
- 2500 DECT endpoints
- 2500 accounts
- 2500 simultaneous calls



**Yealink W90 MC Solution**  
(W90DM+W90B)

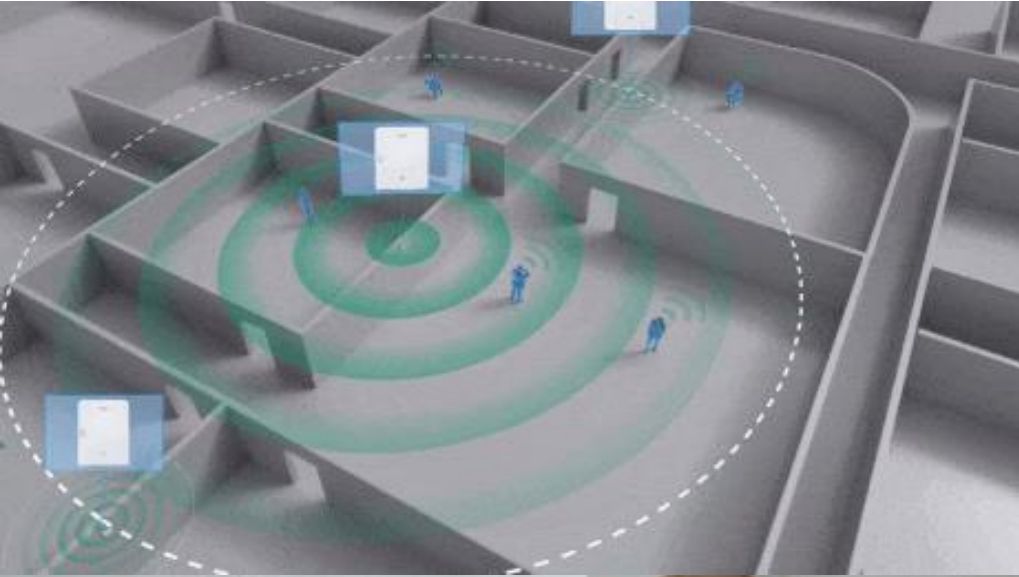
- 60 bases
- 250 DECT endpoints
- 250 accounts
- 250 simultaneous calls



**Yealink W80 MC Solution**  
(W80DM+W80B)

- 30 bases
- 100 DECT endpoints
- 100 accounts
- 100 simultaneous calls

# Yealink DECT Multi-cell System – W80 & W90 DECT Base Station



## Seamless Stability

- In poor signal transmission environment and strong signal interference, the Lan Sync guarantees stable roaming.

## Easy Deployment

- DECT Deployment Toolkit, IP discovery tool and auto sync level for quick register and management of large number of endpoints.

## Full Scenarios

- Compatible with Yealink handset, DECT conference phone, DD Phone, and headsets, providing large flexibility and scalability.

# Specifications

|                    | W70B             | W80 MC           | W90 MC           | VIM              |
|--------------------|------------------|------------------|------------------|------------------|
| Solution           | W70B             | W80DM+W80B       | W90DM+W90B       | VIM+W90DM+W90B   |
| Number of DMs      | -                | 1                | 1                | 10               |
| Number of Bases    | 1                | 30               | 60               | 600              |
| Number of Handsets | 10               | 100              | 250              | 2500             |
| Number of Accounts | 10               | 100              | 250              | 2500             |
| Simultaneous Calls | 20               | 100              | 250              | 2500             |
| Sync Type          | DECT             | DECT             | DECT/LAN         | DECT/LAN         |
| DM Backup          | -                | No Support       | Support          | No Support       |
| Signal             | Built-in antenna | Built-in antenna | External antenna | External antenna |
| Roaming            | -                | System           | System           | System           |
| Handover           | -                | System           | System           | Within DM        |

# Yealink DECT Desk Phone – For Fixed Position Scenarios

Compared with DECT mobile handset, Yealink DDphone can greatly enhance the productivity of fixed-position staff in the DECT environment, such as supermarket, warehouse and restaurant, etc.



## Experience Upgrades Compared to DECT Mobile Handset

Brings you widescreen interactive experience via 4.3-inch backlight HD color screen, without missing any call information.

## Supports 6 BLF/BLF List keys

- The ONLY DECT phone in the world that can implement Busy Lamp Field (BLF) function.
- Enhance your productivity by 10 Line Keys, easy to achieve speed dial, quick transfer, call pickup and other functions.



Warehouse Clerk



Supermarket Cashier



Restaurant Cashier



# Yealink DECT Headsets – For Hands-Free Experiences



Keeping the team connected is key to success in places like retail stores, factories, restaurants, etc. WHD622, WHM621, and WHM631 with Charging Cable are DECT headsets to provide seamless and hands-free team communication in such spaces.



WHM621 with  
Charging Cable



WHD622 with  
Charging Cable



WHM631 with  
Charging Cable

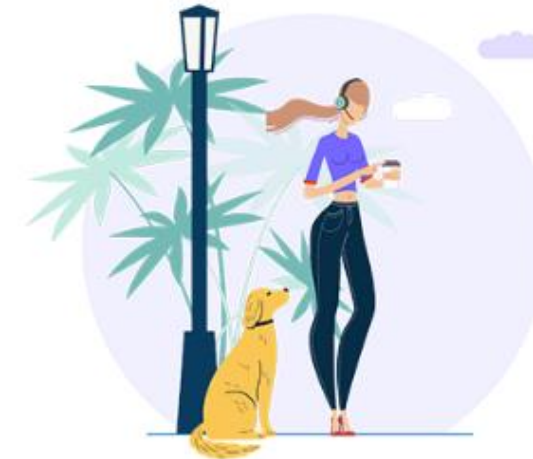
# Yealink DECT Desk Headsets – Solution Highlights



**Answer calls  
with hands free**



**Make outgoing calls  
with a handset**



**All-day  
wear comfort**



**Push-to-talk**



**Internal shared lines  
for incoming calls**



**Internal intercom for simply  
dialing via a numeric key**





Yealink

THANK YOU